

TYPICAL FLOOR BEAM SCHEDULE:-

BEAM MKD.	BEAM SIZE	SUPPORT REINFORCEMENT			SPAN REINFORCEMENT		
		TOP	BOTTOM	STIRRUPS	TOP	BOTTOM	STIRRUPS
BY-1	200X600	3-20T+3-16T	3-20T	2L-8T@115 C/C	2-20T	3-20T+3-16T	2L-8T@200 C/C
BY-2	200X500	3-20T	3-20T	2L-8T@115 C/C	2-20T	3-20T	2L-8T@200 C/C
BY-3	200X600	3-20T+3-16T	3-20T	2L-8T@115 C/C	2-20T	3-20T+3-16T	2L-8T@200 C/C
BY-4	200X600	3-20T	3-20T	2L-8T@115 C/C	2-20T	3-20T	2L-8T@200 C/C
BY-5	200X600	3-20T+3-16T	3-20T	2L-8T@115 C/C	2-20T	3-20T+3-16T	2L-8T@200 C/C
BY-6	200X400	2-20T	3-20T	2L-8T@115 C/C	2-20T	3-20T	2L-8T@200 C/C
BY-7	200X600	3-20T+3-16T	3-20T	2L-8T@115 C/C	2-20T	3-20T+3-16T	2L-8T@200 C/C
BY-8	200X400	2-20T	3-20T	2L-8T@115 C/C	2-20T	3-20T	2L-8T@200 C/C
BY-9	200X600	3-20T+3-30T	3-20T	2L-8T@115 C/C	2-20T	3-20T+3-30T	2L-8T@200 C/C
BY-10A	200X400	2-20T	3-20T	2L-8T@115 C/C	2-20T	3-20T	2L-8T@200 C/C
BY-10	200X600	3-20T+3-16T	3-20T	2L-8T@115 C/C	2-20T	3-20T+3-16T	2L-8T@200 C/C
BY-11	200X600	3-20T+3-30T	3-20T	2L-8T@115 C/C	2-20T	3-20T+3-30T	2L-8T@200 C/C
BY-12	200X400	2-20T	3-20T	2L-8T@115 C/C	2-20T	3-20T	2L-8T@200 C/C
BY-13	200X600	3-20T+3-30T	3-20T	2L-8T@115 C/C	2-20T	3-20T+3-30T	2L-8T@200 C/C
BY-14	200X600	3-20T+3-30T	3-20T	2L-8T@115 C/C	2-20T	3-20T+3-30T	2L-8T@200 C/C
BY-15	200X500	3-20T+3-16T	3-20T	2L-8T@115 C/C	2-20T	3-20T+3-16T	2L-8T@200 C/C
BY-16	200X600	3-20T+3-30T	3-20T	2L-8T@115 C/C	2-20T	3-20T+3-30T	2L-8T@200 C/C
BY-17	200X600	3-20T+3-16T	3-20T	2L-8T@115 C/C	2-20T	3-20T+3-16T	2L-8T@200 C/C
BY-18	200X600	3-20T	3-20T	2L-8T@115 C/C	3-20T	3-20T	2L-8T@200 C/C
BY-19	200X400	2-20T	3-20T	2L-8T@115 C/C	2-20T	3-20T	2L-8T@200 C/C
BY-20	200X600	3-20T+3-16T	3-20T	2L-8T@115 C/C	2-20T	3-20T+3-16T	2L-8T@200 C/C
BY-21	200X600	3-20T+3-30T	3-20T	2L-8T@115 C/C	2-20T	3-20T+3-30T	2L-8T@200 C/C
BY-22	200X600	3-20T	3-20T	2L-8T@115 C/C	3-20T	3-20T	2L-8T@200 C/C
BY-23	200X600	3-20T	3-20T	2L-8T@115 C/C	3-20T	3-20T	2L-8T@200 C/C
FRP-1	200X750	3-25T+3-25T	3-25T	2L-8T@115 C/C	2-25T	3-25T+3-25T	2L-8T@200 C/C
FRP-2	200X750	3-25T+3-25T	3-25T	2L-8T@115 C/C	2-25T	3-25T+3-25T	2L-8T@200 C/C
FRP-3	200X750	3-20T	3-20T	2L-8T@115 C/C	3-20T	3-20T	2L-8T@200 C/C
FRP-4	200X750	3-25T+3-25T	3-25T	2L-8T@115 C/C	2-25T	3-25T+3-25T	2L-8T@200 C/C
LB-1	200X600	3-20T	3-20T	2L-8T@115 C/C	2-20T	3-20T	2L-8T@200 C/C

TYPICAL FLOOR BEAM SCHEDULE:-

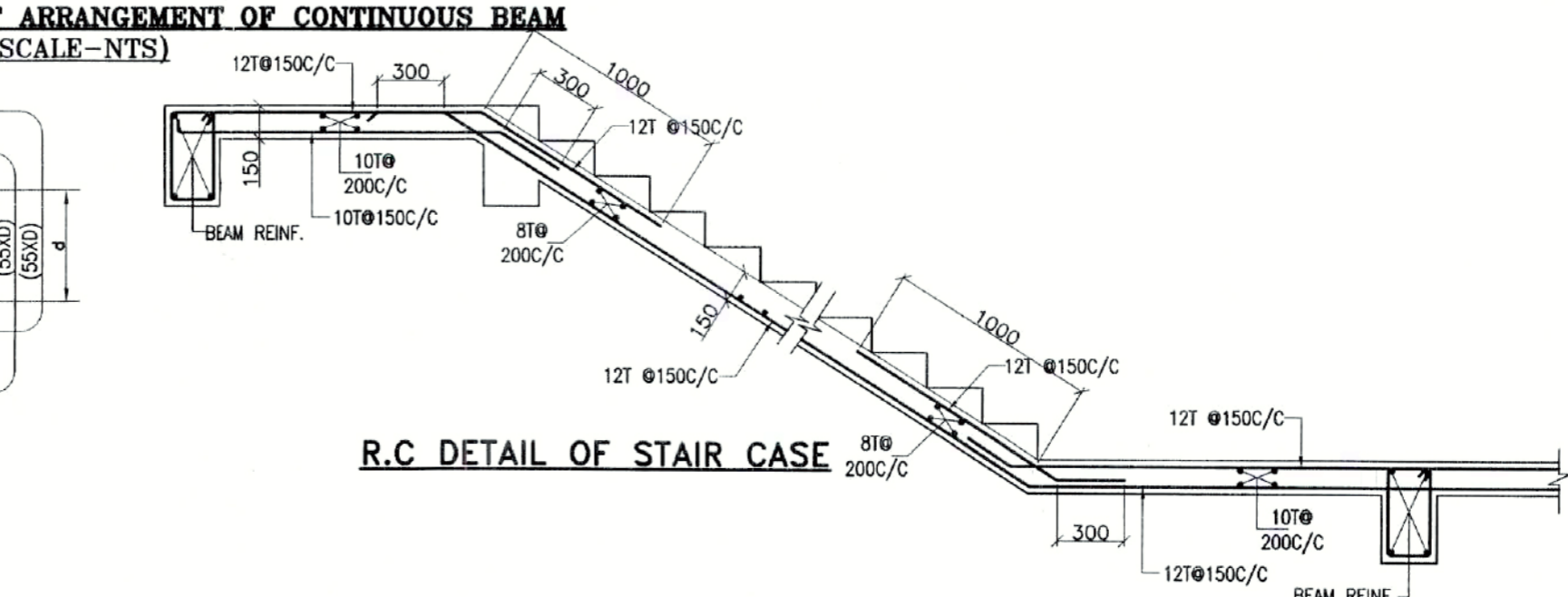
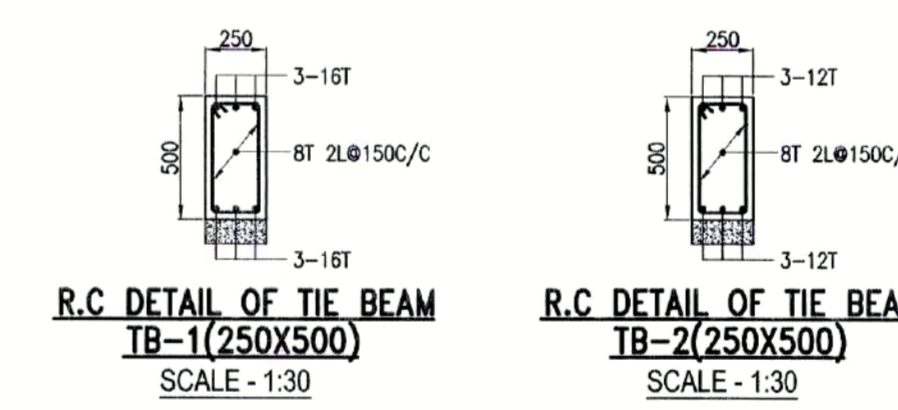
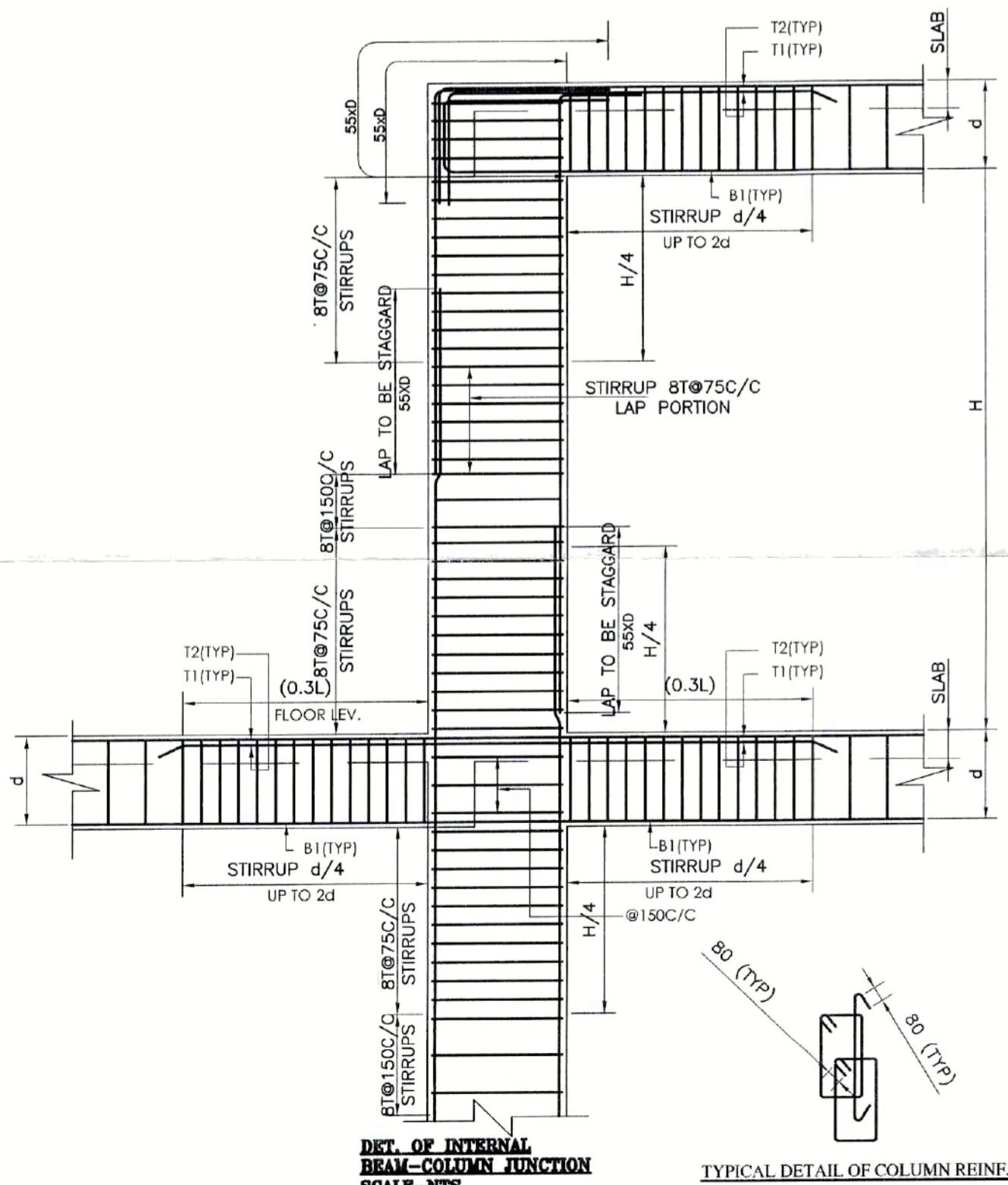
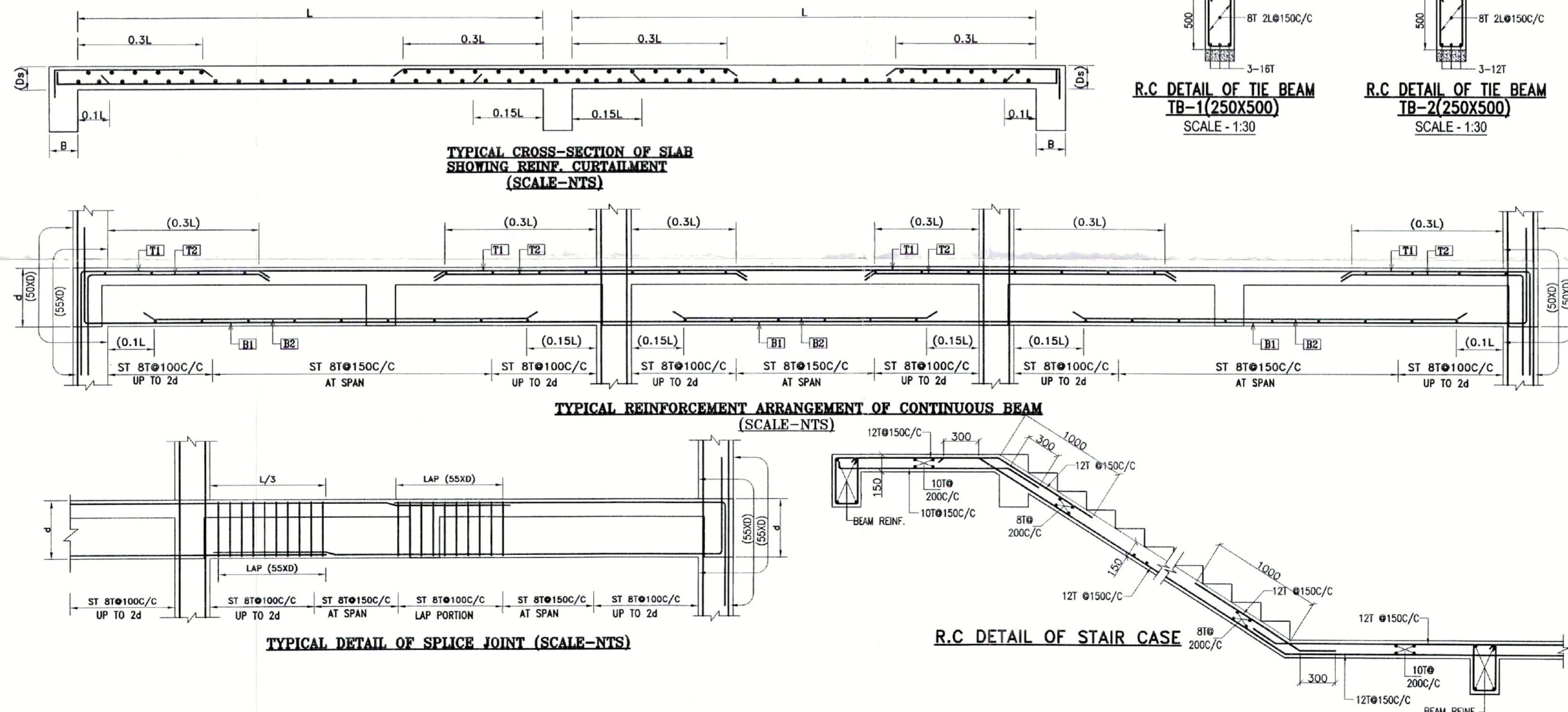
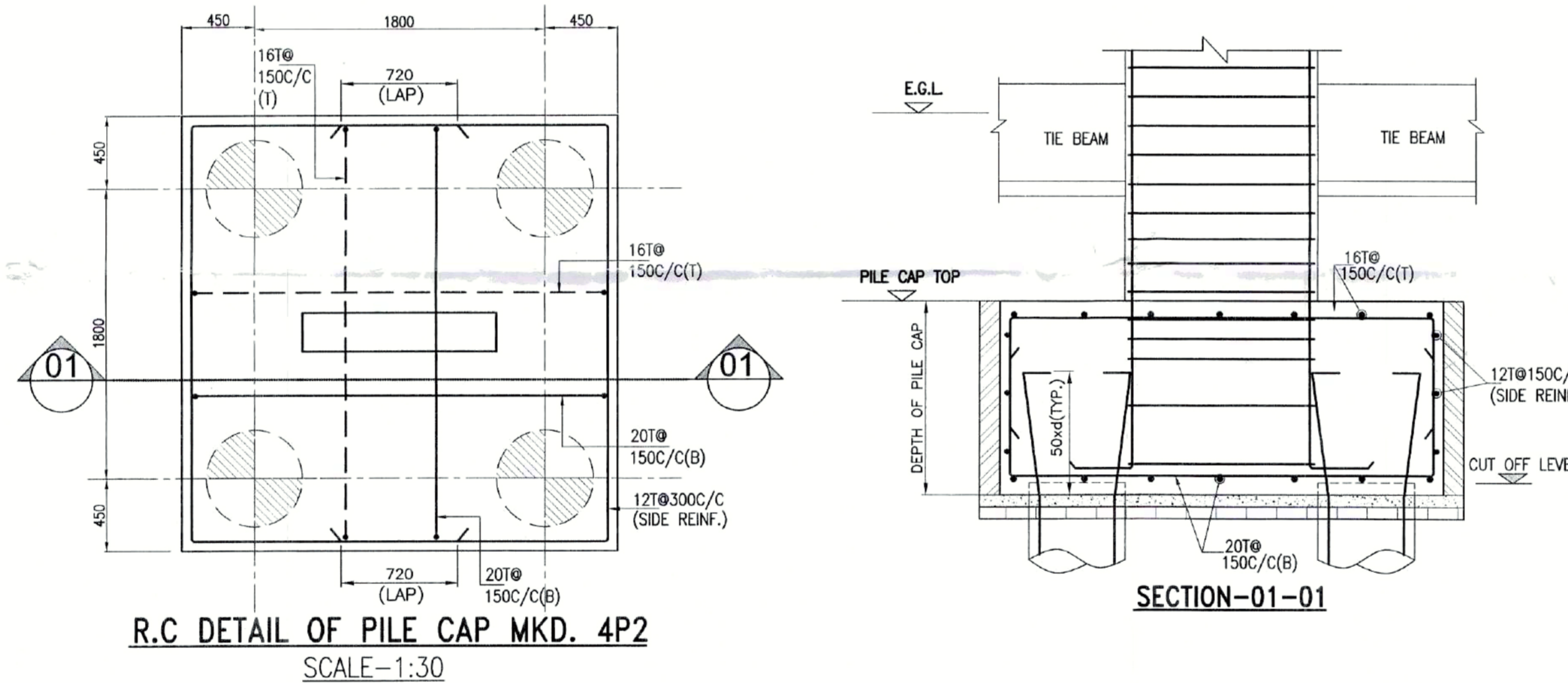
BEAM MKD.	BEAM SIZE	SUPPORT REINFORCEMENT			SPAN REINFORCEMENT		
		TOP	BOTTOM	STIRRUPS	TOP	BOTTOM	STIRRUPS
BY-1	200X600	3-20T+3-16T	3-20T	2L-8T@115 C/C	2-20T	3-20T+3-16T	2L-8T@200 C/C
BY-2	200X600	3-20T	3-20T	2L-8T@115 C/C	2-20T	3-20T	2L-8T@200 C/C
BY-3	200X600	3-20T+3-16T	3-20T	2L-8T@115 C/C	2-20T	3-20T+3-16T	2L-8T@200 C/C
BY-4	200X600	3-20T+3-30T	3-20T	2L-8T@115 C/C	2-20T	3-20T+3-30T	2L-8T@200 C/C
BY-5	200X550	3-20T+3-16T	3-20T	2L-8T@115 C/C	2-20T	3-20T+3-16T	2L-8T@200 C/C
BY-6	200X400	2-16T	3-16T	2L-8T@115 C/C	2-16T	3-16T	2L-8T@200 C/C
BY-7	200X600	2-20T	3-20T	2L-8T@115 C/C	2-20T	3-20T	2L-8T@200 C/C
BY-8	200X500	2-20T	3-20T	2L-8T@115 C/C	2-20T	3-20T	2L-8T@200 C/C
BY-9	200X500	3-20T	3-20T	2L-8T@115 C/C	2-20T	3-20T	2L-8T@200 C/C
BY-10	200X600	3-20T+3-16T	3-20T	2L-8T@115 C/C	2-20T	3-20T+3-16T	2L-8T@200 C/C
BY-11	200X600	3-20T+3-16T	3-20T	2L-8T@115 C/C	2-20T	3-20T+3-16T	2L-8T@200 C/C
BY-12	200X400	2-16T	3-16T	2L-8T@115 C/C	2-16T	3-16T	2L-8T@200 C/C
BY-13	200X600	3-20T+3-16T	3-20T	2L-8T@115 C/C	2-20T	3-20T+3-16T	2L-8T@200 C/C
BY-14	200X400	2-20T	3-20T	2L-8T@115 C/C	2-20T	3-20T	2L-8T@200 C/C
BY-15	200X600	3-25T+3-25T	3-25T	2L-8T@115 C/C	2-25T	3-25T+3-25T	2L-8T@200 C/C
BY-16	200X600	3-25T+3-25T	3-25T	2L-8T@115 C/C	2-25T	3-25T+3-25T	2L-8T@200 C/C
BY-17	200X600	3-25T+3-25T	3-25T	2L-8T@115 C/C	2-25T	3-25T+3-25T	2L-8T@200 C/C
BY-18	200X400	2-16T	3-16T	2L-8T@115 C/C	2-16T	3-16T	2L-8T@200 C/C
BY-19	200X500	3-20T	3-20T	2L-8T@115 C/C	2-20T	3-20T	2L-8T@200 C/C
BY-20	200X600	3-20T+3-30T	3-20T	2L-8T@115 C/C	2-20T	3-20T+3-30T	2L-8T@200 C/C
BY-21	200X600	3-20T+3-30T	3-20T	2L-8T@115 C/C	2-20T	3-20T+3-30T	2L-8T@200 C/C
BY-22	200X600	3-20T+2-16T	3-20T	2L-8T@115 C/C	2-20T	3-20T+2-16T	2L-8T@200 C/C
BY-23	200X400	2-16T	3-16T	2L-8T@115 C/C	2-16T	3-16T	2L-8T@200 C/C
BY-24	200X600	3-25T+3-25T	3-25T	2L-8T@115 C/C	2-25T	3-25T+3-25T	2L-8T@200 C/C
BY-25	200X600	3-20T+3-16T	3-20T	2L-8T@115 C/C	2-20T	3-20T+3-16T	2L-8T@200 C/C

COLUMN SCHEDULE

COLUMN MKD.	COL. SIZE	FOUNDATION TO 6TH. FLOOR	6TH. FLOOR TO 12TH. FLOOR	12TH. FLOOR TO ROOF
C1, C2, C3, C4, C5, C9, C12, C13, C14, C15, C16, C17, C18, C19, C20, C21, C22, C23, C24, C25, C26, C27, C28, C30, C32, C33, C35, C36, C37, C38, C39, C41, C42, C43, C44, C45, C46, C47, C48, C49, C50, C51, C52, C53, C54, C55, C57, C58, C59, C60, C61, C63, C64, C65, C66, C67, C68, C69, C70, C71, C72, C73, C74, C75, C76, C77, C78, C79, C80, C81, C82, C83, C84, C85, C86, C87, C88, C89, C90, C91, C93, C94, C95, C96, C98, C99, C100, C101, C102, C203, C104, C105, C106, C107, C108, C109, C110, C111, C112, C113, C114, C116, C117, C121, C124, C125, C128, C126, C127	(200X1200)	20-16T	12-16T+8-12T	8-16T+12-12T
C5, C8	(200X1200)	22-16T	14-16+8-12T	8-16+14-12T
C6, C7, C10, C11, C34, C40, C56, C62, C92, C97, C115, C120, C118, C119, C122, C123	(200X1200)	24-16T	12-16T+12-12T	8-16T+16-12T
C31, C29	(200X1200)	28-16T	14-16+14-12T	10-16+18-12T
CONCRETE GRADE:-		M-40	M-40	M-40
STIRRUP-BT (AS PER BEAM COLUMN JUNCTION)				

FLOOR SLAB SCHEDULE:-

SLAB THK.	SHORTER SPAN		LONGER SPAN	
	SUPPORT TOP	MID SPAN BOTTOM	SUPPORT TOP	MID SPAN BOTTOM
100	8 T @ 150 C/C	8 T @ 200 C/C	8 T @ 150 C/C	8 T @ 200 C/C
115	8 T @ 150 C/C	8 T @ 175 C/C	8 T @ 150 C/C	8 T @ 200 C/C
150	10 T @ 150 C/C	10 T @ 200 C/C	10 T @ 150 C/C	10 T @ 200 C/C



PROJECT
 REVISED PLAN OF 6 NOS G+12 (39.925 M.), 2 NOS. G+18 (58.075 M.) & 5 NOS G+28 (93.40 M) AFFORDABLE HOUSING ALONG WITH A SINGLE LAYER CENTRAL BASEMENT & PODIUM UNDER PRADHAN MANTRI AWAS YOJANA AT PRE. NO.39/1 SHALIMAR ROAD, MOUZA SHIPUR SHEET NO.169,170,179,180, J.L NO. 1, L.R. KHATIAN NO. 170,9,15,17,L.R. DAG NO.12,13,39, 40,41,42,44,45,60,61,62,63,6,7,8, 9,10,11,12,13,14,15,16,17,21, 22, 24,1,2,11 P.S-SHIPUR, WARD NO-39, BOROUGH -VI, DIST HOWRAH-711103, UNDER HOWRAH MUNICIPAL CORPORATION.WEST BENGAL,PREVIOUSLY FIRE NOC OBTAINED VIDE MEMO NO. FSR /0125186211300102 DATED 9.04.2021

TITLE:
 R.C DETAIL OF COLUMN, BEAM & SLAB SCHEDULE (TOWER-7)

SPECIFICATION
 1. 1ST CLASS CEMENT BRICK WORK IN SUPERSTRUCTURE
 2. 200 THK. EXT. BRICK WALL & 100 THK. INT. BRICK WALL IN 1:4 CEM-SAND MORTAR
 3. LEAN CONC. (1:3:6) WITH 18 MM. DOWN GRADED STONE CHIPS FOR ALL P. C. C. WORKS.
 4. M-25 CONC.(1 : 1 : 2) FOR ALL R.C. WORKS
 5. 20 MM. & 15 MM. THK. PLASTER (1:5) ON EXT. & INT. BRICK WALL RESPECTIVELY & 10 MM. THK. PLASTER (1:3) ON CEILING
 6. 20 X 6 FLAT ORNAMENTAL GRILL WITHIN WINDOW FRAME & AV. 40 MM. THK. MARBLE FLOORING INCLUDING SKIRTING OVER R.C.C. FLOOR SLAB
 7. SINGLE LAYER F.B.S. IN FOUNDATION & PLINCH
 8. HIRE & LABOUR FOR SHUTTERING & LABOUR WORKS INCLUDING STOUT PROPS TO BE PLACED AS PER DIRECTION
 9. TOR STEEL BAR FOR ALL R.C. WORKS INCLUDING DISTRIBUTORS & BINDERS
 10. SANITARY & PLUMBING FITTING & FIXING COMPLETE AS PER RULE
 11. MATERIALS TO BE USED : CEMENT- PORTLAND, SAND- MEDIUM COARSE, STONE CHIPS- 19 MM. DOWN GRADED
 12. CLEAR COVER TO MAIN REIN. FOUNDATION- 50 MM., COLUMN- 40 MM., BEAM- 25 MM., SLAB- 20 MM.
 13. SAL WOOD TO BE USED FOR DOOR & WINDOW FRAME & TEAK WOOD FOR SHUTTERS
 14. ALL DIMENSIONS ARE IN MM. UNLESS OTHERWISE MENTIONED & WRITTEN DIMENSIONS WILL SUPERCEED MEASURED DIMENSIONS.

DECLARATION
 THE PLOT IS BUTTED & BOUNDED BY BOUNDARY WALL. THE CHARACTER OF THE ROAD IS A H.M.C. ROAD. I DO HEREBY DECLARE WITH FULL RESPONSIBILITY THAT THE BUILDING PLAN HAS BEEN DRAWN BY ME AS PER PROVISION OF K.M.C. BUILDING RULES 2009 AS EXTENDED MUTATIS MUTANDIS TO H.M.C. AND THE SITE CONDITION INCLUDING THE WIDTH OF THE ABUTTING ROAD CONFIRM WITH THE SITE PLAN AND THAT IS BUILDABLE SITE AND NOT A TANK OR FILLED UP LAND.

IDEAL RIVERVIEW PROJECTS PVT. LTD.
 Constitute Attorney

SIGNATURE OF ARCHITECT
 MALAY KUMAR GHOSH
 REG. NO. CAS204854
 35A, DR. SARAT BANERJEE ROAD, KOLKATA-700 029

SIGNATURE OF APPLICANT

DECLARATION
 1. CERTIFIED THAT THE FOUNDATION AND THE SUPER STRUCTURE OF THE BUILDING HAVE BEEN SO DESIGNED BY ME THAT IT IS SAFE IN ALL RESPECT INCLUDING IN THE CONSIDERATION OF THE BEARING CAPACITY & SETTLEMENT OF SOIL.
 2. THE STRUCTURAL DESIGN & DRAWING OF BOTH FOUNDATION AND SUPER STRUCTURE OF THE BUILDING HAS BEEN DESIGNED BY ME CONSIDERING ALL POSSIBLE LOADS (HORIZONTAL & VERTICAL) AS PER THE NATIONAL BUILDING CODE OF INDIA.

BIBEK BIKASH MULLICK
 ESE-38, CLASS-1
 HOWRAH MUNICIPAL CORPORATION

SIGNATURE OF STRUCTURAL ENGINEERS
 BIBEK BIKASH MULLICK

UNDERTAKING
 1) I/WE UNDERTAKE THAT WHEN THE SEWER LINE WILL BE AVAILABLE, I/WE SHALL TAKE CONNECTION AT MY OWN COST & AS PER RULE.
 2) NO BUILDING MATERIALS WILL BE STACKED / DEPOSITED ON ROAD OVERNIGHT.
 3) I/WE SHALL ARRANGE FOR RAISING & MAINTENANCE OF TREE AS SHOWN IN THE DRAWING AT MY OWN COST.

ARCHITECTS
 ESPACE
 35A, DR. SARAT BANERJEE ROAD, KOLKATA 700-029
 PH.NO= 2465-4130,4159

STRUCTURAL CONSULTANT:
 P.M. CONSULTANT
 STRUCTURAL ENGINEERING CONSULTANT
 3A, SIDDHESHWARI ROAD, KOLKATA - 700029.
 PHONE: 033-40061123
 WEB: https://pmcstructure.wixsite.com/pmcon
 Email:pmcstructure@gmail.com, bibekbmr@rediffmail.com

DESIGNED-BBM REF.
 CHECKED-BBM SCALE : 1:100,1:25
 DEALT - roju DATE : 16.10.23

DRG. NO- PMC/MUN/ST/SHALIMAR/TOWER-7/03
 THIS DRAWING IS A PROPERTY OF P M CONSULTANT 3A,SIDDHESHWARI ROAD, KOLKATA-700029. ANY MODIFICATION, CHANGES,DEVIATIONS IS NOT PERMISSIBLE WITHOUT PRIOR INTIMATION TO P M CONSULTANT IN THE CONTRARY. THIS WILL BE TREATED AS ILLEGAL ACT.

THE HOWRAH MUNICIPAL CORPORATION
 BUILDING PERMIT
 BRC No. 114/2023
 Date: 20/10/2023
 Howrah Municipal Corporation

SPACE FOR H.M.C.

PARTY'S COPY

Structural plan and design calculation submitted by the structural engineer have been kept with E.P. No. 144/21-22 Date 3/18/23 for record of the Howrah Municipal Corporation without verification. No deviation from the submitted structural plan should be made at the time of erection without submitting fresh structural plan along with design calculation and stability certificate in the prescribed form, necessary steps should be taken for the safety of the adjoining premises public and private properties and safety of Human Life during construction.

[Signature]
Assistant Engineer
Building Department
Howrah Municipal Corporation

[Handwritten mark]

[Faint stamp]

APPROVED AS PER ORDER OF COMMISSIONER PLANNING
[Signature]
3/18/23

PLACED IN MUNICIPAL BUILDING COMMITTEE DATED 15/9/23